



Peatland Foundation report 2025

The Peatland Foundation

The Peatland Foundation is a non-governmental organization working to ensure that Lithuania's peatlands are restored, protected, and recognized for their vital role in climate regulation and biodiversity conservation.

Our Mission is to restore and safeguard Lithuania's peatlands by bringing together science, society, and public institutions.

To achieve this mission, we:

1. Restore degraded peatlands;
2. Participate in scientific projects and conduct research;
3. Contribute to nature conservation policies and legislation in Lithuania and the European Union.
4. Organize public education activities and awareness events

The Foundation was established by peatland scientists and restoration experts with extensive experience in environmental management projects. Our team combines expertise in climate change, agricultural policy, and ecosystem restoration, while actively seeking innovative solutions.

An advisory board of nature conservation experts from Lithuania and across the European Union supports our work.

Organization activity in numbers:

14

years of
experience

6

members

1

international
intern (Germany)

1

national volunteer
(Lithuania)

6

Peatland
Ambassadors

7

projects
in progress

3

projects successfully
completed

1

new project
launched

Peatland Restoration

X Part of the **Paažuolynė Peatland** (Jonava district) was restored by installing approximately **40 dams** and removing untypical woody vegetation.

Over a 30-year period, this restoration is expected to help **avoid 4,305 tonnes of CO₂e emissions**.

X We looked for a solution regarding a restored peatland located within a territory recently acquired by the **Rheinmetall** company in Baisogala. We seek to ensure the continuity of natural succession and the conservation of the restored biodiversity, and enable the continued use of the peatland for paludiculture and scientific research in Lithuania.

X We also carried out preparatory work for 3 additional peatland restoration projects:


Developed and approved restoration plan for **Žaliasis Raistas** peatland and started developing a concept of nature management for **Praviršulio Tyrulis** peatland.

Conducted an assessment for restoration of **1 additional degraded peatland site**.

Photo by Renata Kilinskaitė



Science & Research

-  In 2025, we began participating in a **Horizon Europe** project — the European Union's flagship research and innovation programme.
-  The Peatland Foundation is a partner in the **PALUWISE project**, which aims to scale up paludiculture (wetland-based agriculture).
-  In Lithuania, we are developing reed canary grass **seed production models to support the development of paludiculture** in Lithuania. In summer 2025, an experimental harvest in Baisogala peatland produced nearly **0.5 tonnes of reed canary grass. Next step is to elaborate the possibilities to use them for the establishment of new paludiculture site.**
-  We launched a **composting experiment**, aimed at producing liquid fertilizers from peatland plant biomass in established paludiculture sites.
-  Additionally, we published **two scientific articles** in high-impact journals:
 - On ecosystem service assessment of degraded forest peatlands.
 - On the use of remote sensing methods for evaluating peatland restoration.

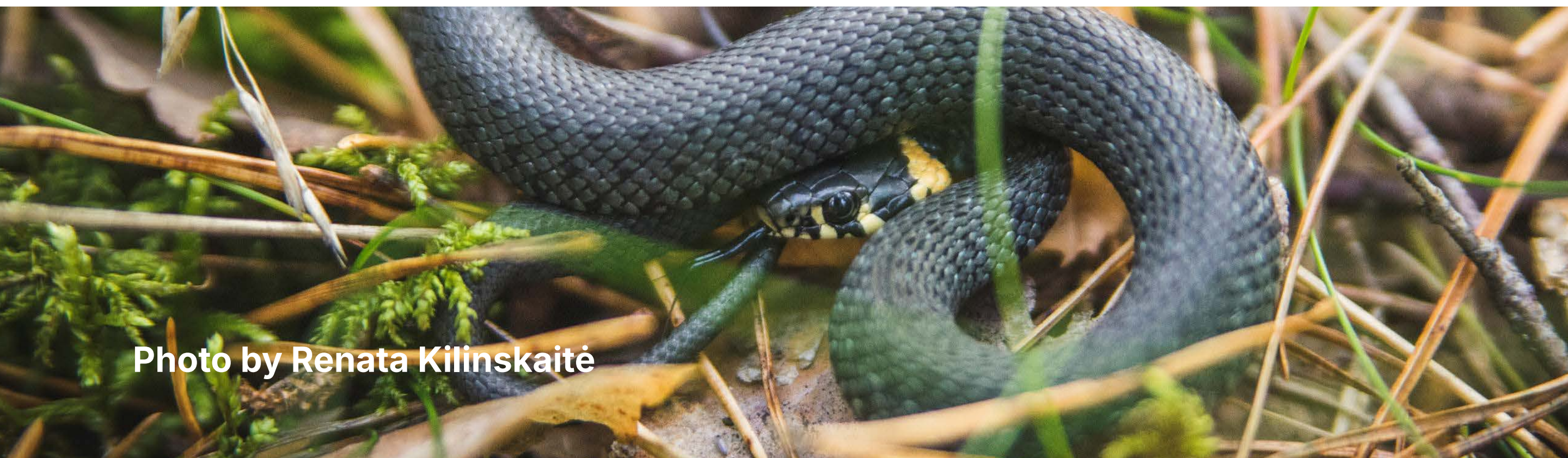






Photo by Renata Kilinskaitė

Advocacy

-  We developed and published an environmental policy paper **“Environmental Position on Peatland Conservation, Restoration and Sustainable Use.”** Prepared in consultation with environmental and scientific communities, the document outlines necessary policy changes in agriculture, forestry, peat extraction, protected areas. It supports Lithuania’s international commitments on peatland restoration and conservation and was submitted to the Ministries of Agriculture and Environment, other institutions and Members of the Lithuanian Seimas.
-  At the Parliament of Lithuania, we **held a conference for decision-makers: “Protect Peatlands for Our Shared Future.”** At the conference our environmental policy position was presented for the first time, experts shared insights on the condition and restoration of Lithuanian peatlands and the exhibition of paludiculture products and peat alternatives was displayed.
-  We prepared an **analysis and recommendations on early-stage recultivation of peat extraction sites in Lithuania**, submitted to the Ministry of Environment and the Geological Survey of Lithuania.
-  Together with international partners, we submitted a position to the European Commission on the **Advanced Materials Act**, contributing to discussions on sustainable material innovation in Europe.

 We engaged with the Ministry of National Defence and Ministry of Environment, **advocating for peatland restoration in border areas** to align national security objectives with the EU Nature Restoration Regulation.


 We **maintain continuous collaboration** with public institutions, providing expertise, policy recommendations, and organizing stakeholder meetings on peatland restoration and protection. Our team actively participates in national working groups, including The peatlands group under the National Nature Restoration Regulation implementation plan; The Monitoring Committee for Lithuania's Agricultural and Rural Development Strategic Plan (2023–2027).



Photo by Renata Kilinskaitė

Education and Public Awareness

-  We prepared **10 publications**, including newsletters, a methodological guide and a practical handbook for farmers.
-  We organized **2 cross-border study visits** for specialists and landowners, with near 40 participants.
-  We delivered about **100 hours of educational activities**, including seminars, discussions, field visits and meetings with scientists, policymakers, businesses, landowners and farmers.
-  We organized **more than 10 public events**, campaigns, volunteer actions, and peatland celebrations for children, youth, the rowing community and the general public.
-  **An international symposium** held in nature brought together diverse global perspectives on living in and alongside peatlands — from traditional knowledge and intensive use to conservation, education and contemporary art.
-  Our team delivered presentations at **3 international conferences**.
-  In 2025, **1,000+ people** participated in or learned about peatlands through our educational activities
-  A unique exhibition of paludiculture products and peat alternatives was presented in **5 locations across Lithuania**, attracting around **500 visitors**. The exhibition featured building panels made from paludiculture biomass, sound insulation materials, decorative elements, biodegradable tableware and drinking straws, textile, sustainable peat alternatives, and other products.

Organization funds

Funding:

EU funds	Private funds	Lithuanian state budget	Commissioned works
320 252€	53 100€	49 702€	81 242€

Support:

Private individuals support	Legal entities support
3 607€	5 132€



Photo by Renata Kilinskaitė